



ACCESS APPLICATIONS
ANYWHERE
>>> WITH **GO-GLOBAL 4**

INTRODUCING GO-GLOBAL CLOUD

THE EASY WAY TO DEPLOY A SECURE,
PRIVATE CLOUD FOR CROSS-PLATFORM,
REMOTE APPLICATION AND FILE ACCESS



GO-Global® Cloud takes application virtualization to the next level. It's the easy and cost-effective way to create a private cloud environment. While your Windows, UNIX, and Linux applications and documents remain in a secure central location, they can be accessed seamlessly by authorized users running Windows, Linux, UNIX, Mac OS X, or any Web browser.

GO-Global Cloud consists of three components:

- GO-Global Host
- GO-Global Cloud Server
- GO-Global Cloud Client

GO-GLOBAL HOST

GO-Global Windows Host 4

GO-Global Windows Host 4 virtualizes Windows applications without having to modify them. Local and remote users access the applications just as though they were running locally. Existing Windows applications can be Web-enabled in as little as 15 minutes, retaining 100% of their features, functions and branding. To learn more, refer to the GO-Global Windows Host 4.0 data sheet.

GO-Global UNIX Host 4

Coming soon from GraphOn® will be GO-Global UNIX Host 4 to Web-enable UNIX and Linux applications for virtualized access via GO-Global Cloud. Currently, GO-Global for UNIX 2.2 is available as a standalone solution for UNIX/Linux application virtualization.

GO-GLOBAL CLOUD SERVER

GO-Global Cloud Server provides a high-availability, secure gateway to GO-Global Hosts. Administrators have extensive control over user rights and

“Finally, a private cloud solution that's powerful and secure, yet easy to deploy and use.”



privileges, allowing them to monitor and manage clusters of GO-Global Hosts. Users can access and share applications, files, and documents via simple hyperlinks. And developers can integrate Windows and Linux applications into their Web-based enterprise and workflow applications.

GO-GLOBAL CLOUD CLIENT

Users running Windows, UNIX, Linux, Mac OS X, or portable devices access and manage GO-Global Hosts by running the GO-Global Client, available as a native client or browser plug-in. Alternatively, users can connect from any platform by simply using a Web browser that supports Adobe Flash 9 or later.

BENEFITS AT A GLANCE

- **Access from Anywhere.** Applications and documents can be accessed from any location and virtually any OS, even across firewalls and proxy servers.
- **Scalability.** Provides high-availability load balancing and centralized management of large server farms.
- **Security.** User connections are enabled via a multi-layered security system, including smart card authorization support.
- **Control.** Administrators can set user and group permissions and publish different applications to different users.
- **Flexibility and Customization.** Developers can integrate GO-Global Cloud capabilities with Web applications.
- **Private VDI.** Users and administrator can get a full desktop view of the Host in a private session.
- **New Business Opportunities.** GO-Global Cloud opens the door to new business opportunities, including SaaS (Software as a Service), private cloud hosting, and remote access.

A SECURE GATEWAY TO THE WEB

GO-Global Cloud is an easy, yet feature-rich application virtualization solution featuring a modern user interface. GO-Global Cloud Server runs under Windows 2003 or 2008 (and will soon be available for Red Hat Enterprise Linux 5). It extends access to users who might be prevented from connecting directly to a Host due to a firewall or proxy server. It does so by providing an automatic peer-to-peer connection when a direct connection between the Client and Host is not possible.

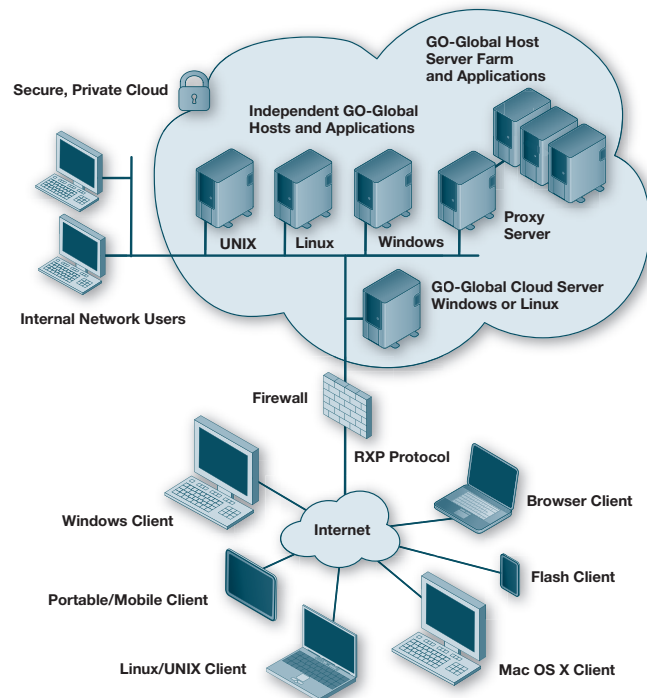


GO-Global Cloud Server ensures that only authorized users are allowed to connect to Hosts and access applications and documents. It includes a Java-based Web application that uses Spring Security for authentication. On Linux, GO-Global Cloud Server supports name/password, PAM, and LDAP authentication. On Windows, it supports name/password, client certificates, and Integrated Windows Authentication.

GO-Global Cloud Server can be installed without the Host on a dedicated GO-Global Cloud Server, or together with the Host on stand-alone GO-Global servers.

GO-GLOBAL CLOUD FEATURES

- **Load Balancing.** Administrators can create high-availability, load-balancing clusters of GO-Global Hosts. These clusters have no single point of failure and balance the load among Hosts, factoring in CPU usage, memory usage, the number of running sessions, etc.
- **Flash-based Client and HTTP Tunneling.** With other application virtualization solutions, users are often unable to access applications because they do not have rights to install a required plug-in, or firewalls and proxy servers prevent the connection. GO-Global Cloud solves these problems by allowing access through any Flash-enabled browser and by using standard ports (Port 80, for example) and protocols (HTTP, for example).
- **Document Sharing.** Users can securely access and share documents and files from GO-Global Hosts. Depending on access rights, users can view and edit documents whether or not they have the corresponding application installed. The documents never have to leave the secure GO-Global Host.
- **Web API.** Virtually all GO-Global Cloud features can be controlled programmatically from Web-based applications using the GO-Global Cloud Web API. Developers can start sessions, authenticate users, create user-private workspaces, move files to and from a workspace, start and stop applications, and monitor server usage.
- **Enterprise-level Authentication.** Smart authentication is supported through third-party solutions using the SAML protocol (Nordic Edge, for example).



- **Secure Architecture.** Robust authentication and access control options allow GO-Global Hosts to be accessed securely over the Internet.
- **Per-user Configuration.** Administrators can publish applications, configure settings, and edit permissions on a per-user basis. Permissions, session timeouts, printer settings, and visual settings can be set per user or group. Application shortcuts are stored in User Profile and Home directories, allowing use of third-party tools and OS features such as Group Policy Preferences.
- **Directory Services and Smart Authentication.** Microsoft Active Directory, LDAP, and other directory services are supported. Users can sign in using Active Directory accounts, and administrators can define Host access control lists using Active Directory users and groups.
- **Usage Monitoring.** Administrators can easily shadow sessions, terminate sessions, and evaluate user and session resources.
- **Drag and Drop Publishing.** Users and administrators can publish applications and files by simply dragging and dropping icons from one folder to another.
- **Message Broadcasting.** Users can broadcast messages to other users signed in to GO-Global Cloud. And administrator can notify users of upcoming host maintenance, upgrades, etc.
- **Private VDI.** Users and administrator can see a full desktop view of the Host in a private session. Administrators can manage the Hosts using a desktop view. When using VMs, they can configure GO-Global Cloud as a simple VDI, application delivery, and document sharing solution – all in one product.